



REARSIGHT CAMERA SYSTEM

250-8655 Installation Instructions

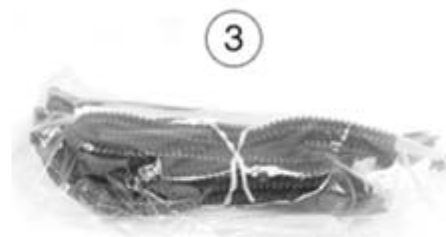
Parts Identification	Page 1
System Layout	Page 2
Installation	Page 2-4
Testing & Reassembly	Page 4
Installation Tips	Page 5
Parking Grid Lines Note	Page 5

 **CAUTION:** To minimize risk of injury from contact with the monitor during an accident, always wear your seat belt.

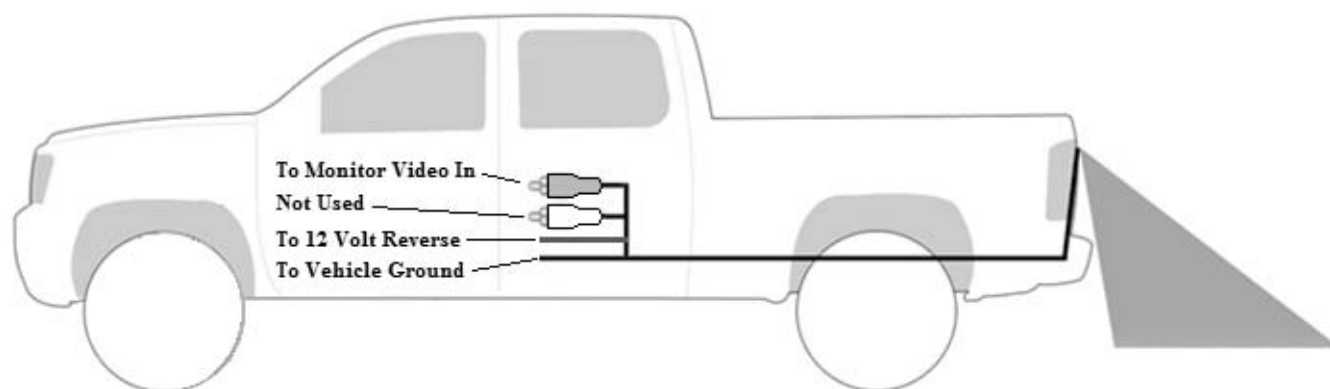
 **CAUTION:** To minimize risk of injury from contact with the monitor during an accident, always wear your seat belt. It is advisable to disconnect the negative battery cable for 3 minutes before beginning installation to avoid unintended air bag deployment. Note and record any anti-theft radio codes prior to disconnecting.

Parts Identification

Item	Qty.	Part Number	Description
1	1	250-8655	Tailgate Latch Camera
2	1	250-8656	30' Extension Harness
3	1	N/A	36" convoluted tubing



System Layout



Installation

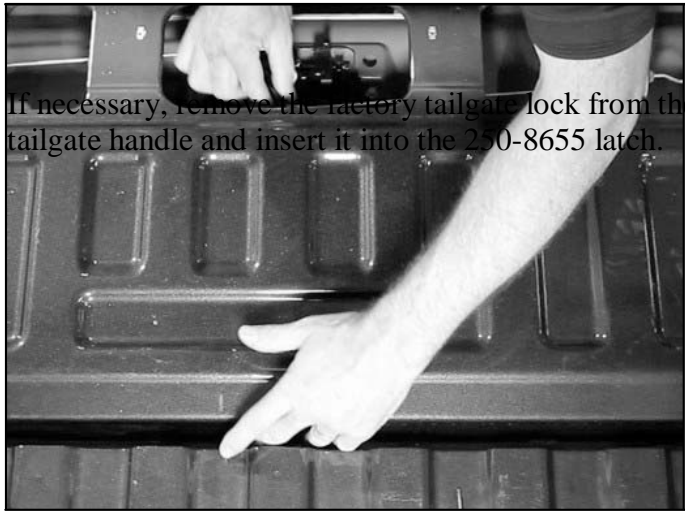


Begin by removing the 8 bolts securing the tailgate cover to the tailgate.



Unhook the connectors from the tailgate latch release and remove the two tailgate-handle bolts.





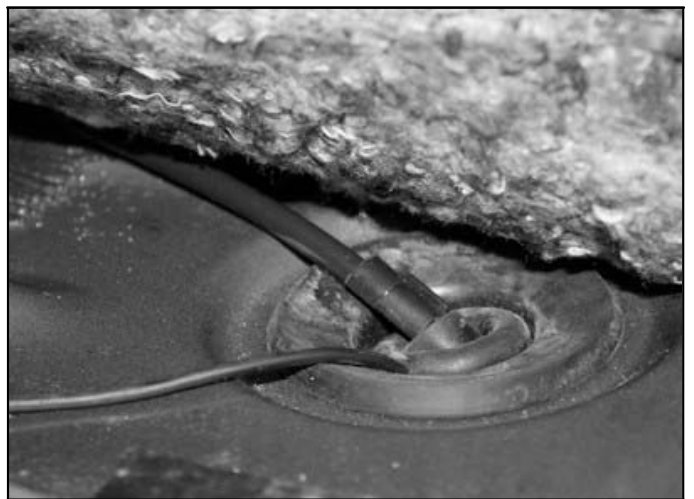
If necessary, remove the factory tailgate lock from the tailgate handle and insert it into the 250-8655 latch.



Place the 250-8655 latch in place, tighten the two nuts, and reconnect the latch releases.

Wrap the camera harness with convoluted tubing and route it to the bottom tailgate opening.

Feed the camera harness into the opening of the truck bed and connect to 30' extension harness 250-8656.



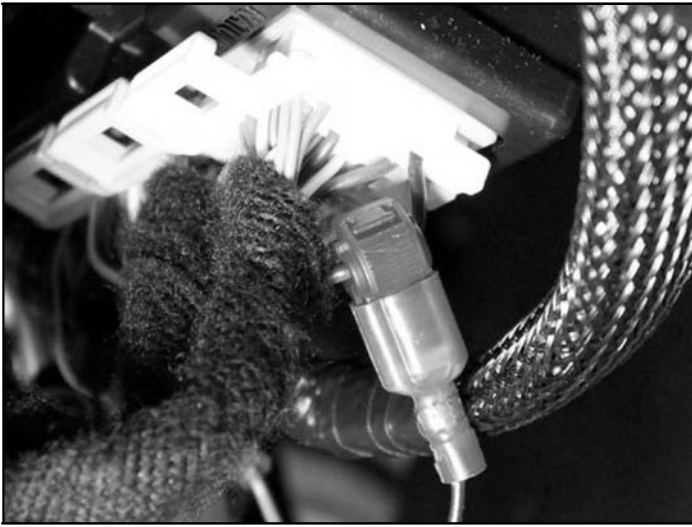
Route harness 250-8656 to the front driver side of the truck attaching it to the factory harness with cable ties.

Route harness 250-8656 through the grommet in the floor board on the driver side of the truck.

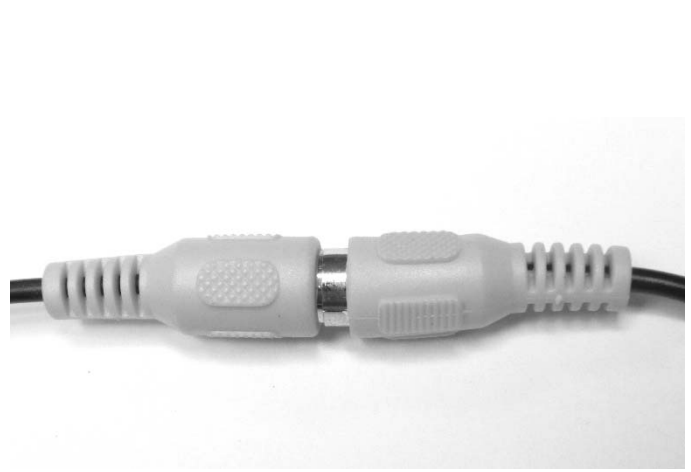


Locate the BCM connectors behind the driver-side dashboard knee panel.

Connect the solid red wire from harness 250-8656 to the green w/violet wire of the fourth from left BCM plug using the included t-taps (an auxiliary power source can also be used if constant power is desired).



Connect the solid black wire from harness 250-8656 to the solid black wire of the far-right BCM plug using the included t-taps.



Connect the yellow male RCA from harness 250-8656 to the monitor's "video in" RCA.

Testing and Reassembly

Testing

1. Reconnect the negative battery cable and torque to 3 ft-lbs.
2. Re-enter any theft deterrent information (if applicable).
3. Turn the ignition switch to the ON position.
4. Shift the vehicle into reverse and confirm video feed to your device.

Note: If there is no picture present, re-check all harness connections.

Reassembly

1. Reinstall all trim pieces taking special care to ensure harnesses and wiring connections are properly secured.
2. Make sure no harnesses are bent or pinched by trim pieces.
3. Reconnect all disconnected bulbs and check for function.

Installation Tips

- Confirm proper cable extension connector orientation and always verify proper ends are routed in correct direction.
- It is a good idea to dry-fit all pieces in this kit before permanently attaching them to ensure proper orientation and operation before beginning installation for familiarization with components.
- Always treat any metal exposed during installation with a rust preventative compound to prevent system failure due to rust and/or corrosion.
- Always seal any holes drilled with the provided sealing putty to prevent water infiltration through unprotected areas.
- Confirm integrity of mechanical and electrical connections before moving to next installation sequence.

Parking Gridlines Note

This camera includes parking gridlines overlaid on the video feed by default to assist when parking in reverse. If the driver does not wish for gridlines to be included, simply locate loop wire connected to the camera harness (**figure 1**) and cut it in half (**figure 2**).

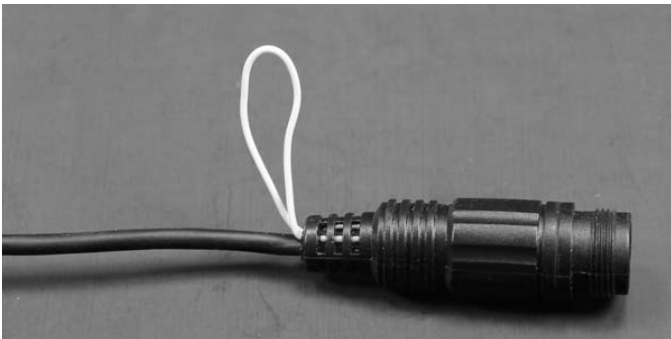


Figure 1



Figure 2

Installation Notes
