

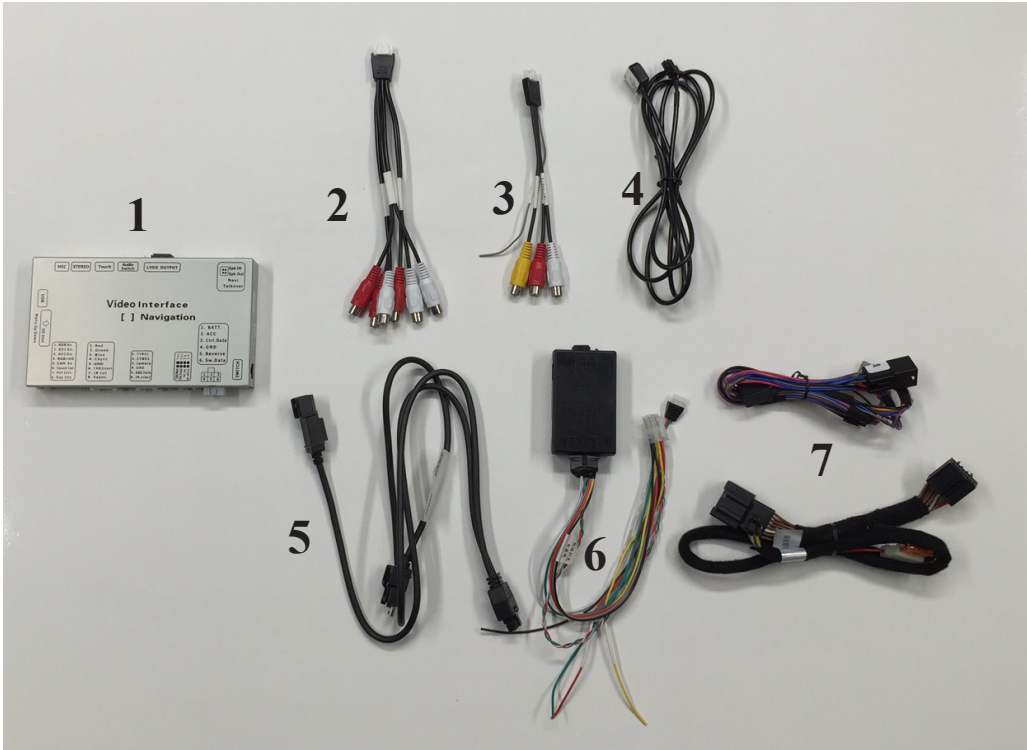
Introduction & Features

The 250-8423 is a reverse camera integration interface that allows the addition of a reverse camera input if the vehicle is not equipped with one from the factory (reverse camera sold separately). The interface also adds 2 extra video inputs and audio switching capabilities for 2 sources.

Important Notes

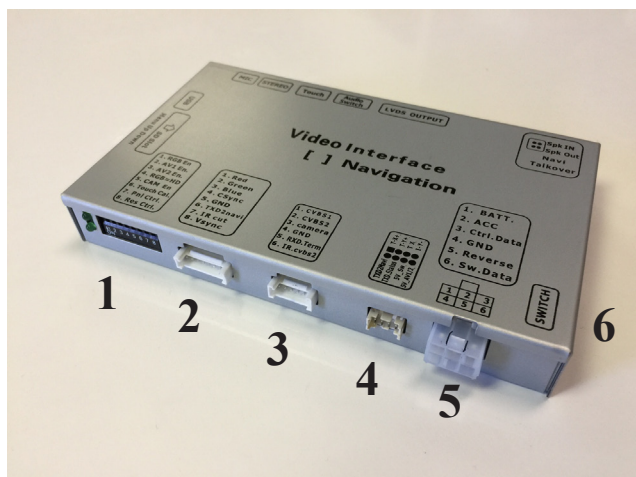
1. If you change the dipswitch settings, you must disconnect and reconnect power for the change to take effect.
2. The RCA cables labeled “Audio 1 In”, “Audio 2 In” and “Audio Out” do not provide an audio input to the factory radio. These inputs and output can only be used as an audio switcher. You must still use another device to provide an audio input to your factory radio.
3. Audio 1 In is tied to Video 1 In and Audio 2 In is tied to Video 2 In. When you switch between video sources using the factory screen or the manual button provided, it will also switch the audio inputs.
4. The menu can only be seen when the interfaces video input has been engaged.
5. Any dipswitch labeled “Not Used” must be in the off (up) position.

What’s Included



1	250-8423 Module
2	Audio Switcher harness
3	Video Input harness
4	Source Switching button
5	LVDS harness
6	Main CAN-Box harness
7	CAN-Box sub-harnesses

Wiring Connection Chart/Module Overview



Interface Ports

1	Dipswitches
2	Not Used
3	Video Input Connector
4	CAN-Box Harness Connector A
5	CAN-BOX Harness Connector B
6	Source Switch Connector
7	Not Used
8	LVDS Connector
9	Audio Switch Connector
10	Not Used
11	Not Used
12	Not Used

Main CAN-Box Harness

Red	Accessory Output (1 amp)
Yellow	12v+ (1 amp)
Black	Ground
Green	Reverse Trigger (1 amp)

Video Input Harness

Red RCA	Reverse Camera Input
White RCA	Video Input 1
Yellow RCA	Video Input 2

Dipswitches

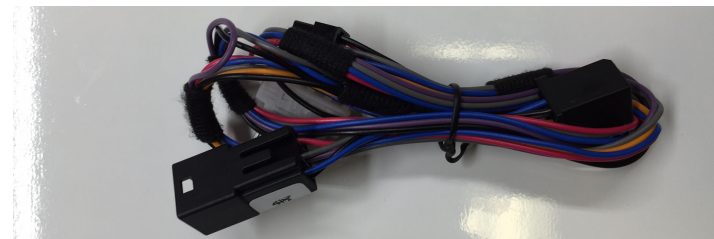
* **PLEASE NOTE:** Any dipswitch labeled "Not Used" must be in the off (up) position.

SET FEATURE DIPSWITCHES TO THE ON POSITION

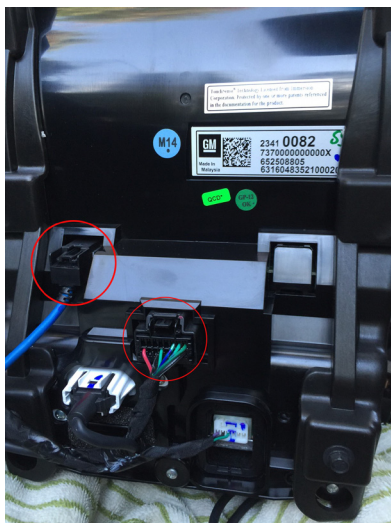
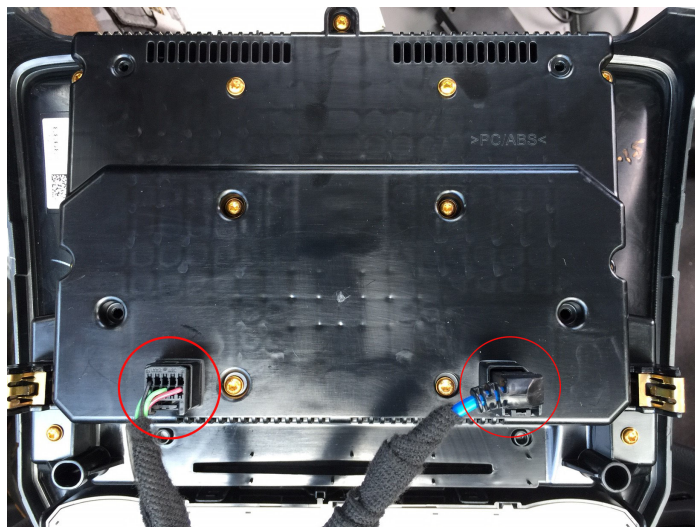
	Not Used	Video In 1 On/Off	Video In 2 On/Off	Not Used	Add Reverse Camera On/Off	Not Used	Display Size 1	Display Size 2
1	2	3	4	5	6	7	8	

Installation Steps

1. Turn on the dipswitches that correspond with the features you want to add. These dipswitches must be set to the proper configuration before connecting the interface to power.
 - a. If you are installing into a vehicle with a factory 8" display, leave dipswitches 7 and 8 in the up position.
 - b. If you are installing into a vehicle with a factory 4" display, put dipswitches 7 and 8 in the down (On) position.
2. Determine which CAN box sub-harness you need to use.

Cadillac**All Other Vehicles**

3. Remove the factory screen assembly and disconnect the factory harnesses.

Cadillac**GM Trucks**

4. Connect the 250-8423 CAN-Box sub-harness to the back of the factory screen assembly.
5. Connect the factory harness into the female connector on the 250-8423 can box sub-harness.
6. Connect the CAN-Box sub-harness to the main CAN-Box harness.
7. Connect the main CAN-Box harness to the 250-8423 module
8. Connect the 250-8423 LVDS harness to the back of the factory screen assembly
9. Connect the factory LVDS harness into the female connectors on the 250-8423 LVDS harness.
10. Connect the LVDS harness to the 250-8423 module

Installation Steps (cont.)

11. Connect reverse camera and any additional A/V inputs to the 250-8423 using the video input harness and the audio switching harness..
12. If you are installing into a vehicle with the 4" screen and are using the additional video inputs, you must also connect and install the supplied source switching button to switch between video sources.
13. The loose wires on the Main CAN-Box Harness can be used to power extra items such as the reverse camera. Each output has a 1A rating. If more current is needed you must wire in a relay. Please see the chart on page 1 for wire colors and descriptions.

Operation

Activating the Reverse Camera

- Place the vehicle into reverse.

Accessing Video 1 and Video 2

- In vehicles equipped with the 4" screen, you must use the supplied source switching button to switch between video sources. Press the button for at least one second then release to switch between the factory screen>Video 1>Video 2.
- In vehicles equipped with the 8" screen you can either press and hold a spot on the screen (preferably the top left corner) for at least 3 seconds or use the supplied source switching button to switch between video sources. Press the button for at least one second then release to switch between the factory screen>Video 1>Video 2.

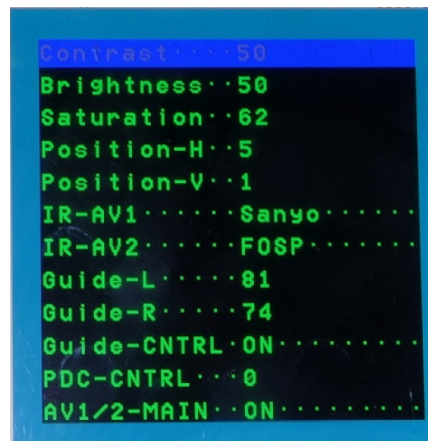
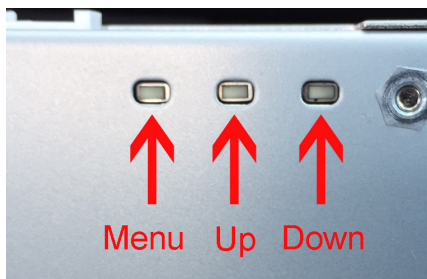
Accessing the menu

PLEASE NOTE: Either the interfaces reverse camera screen or one of the video input screens must be active in order to see the menu.

- Using a pick tool or small screwdriver, press the Menu button on the bottom of the 250-8423 module
- You can then use the Up or Down buttons next to the Menu buttons to make changes
- To go to the next option in the list, simply press the Menu button again. Once you are on the last item and press the Menu button, the Menu will be exited.

Menu Items

- The brightness/contrast/saturation adjusts the color of the current video input.
- The Position H/Position V adjusts the image position on the screen.
- IR-AV1/IR-AV2 is not used in this application
- Guide-L/Guide-R adjusts the position of the reverse camera backup lines
- Guide-CNTRL turns the reverse camera backup lines off/on
- PDC-CNTRL is not used in this application
- AV1/2-MAIN is not used in this application



Troubleshooting

Problem: The reverse camera backup lines are off centered

Solution: You can adjust the position of the backup camera lines in the menu. Also make sure there is an actual reverse camera image being fed into the reverse camera input. The module uses this image to center the lines.

Problem: The reverse camera backup lines do not always appear

Solution: Make sure they are enabled in the menu. If you have changed the position of the lines in the menu, you may need to turn the steering wheel all the way to the left or right to re-engage the lines.

Problem: The source switching button does not switch the video sources.

Solution: You may be pushing the button too quickly. Press and hold the button for one second, and then release it.